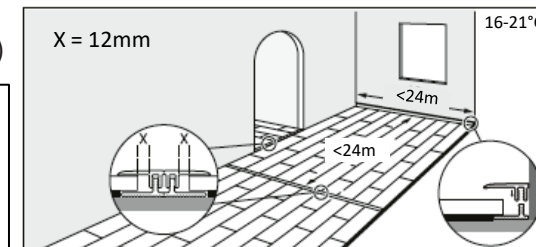


## The 4-in-1 Multi-Purpose Moulding offers an easy solution to finish your floor

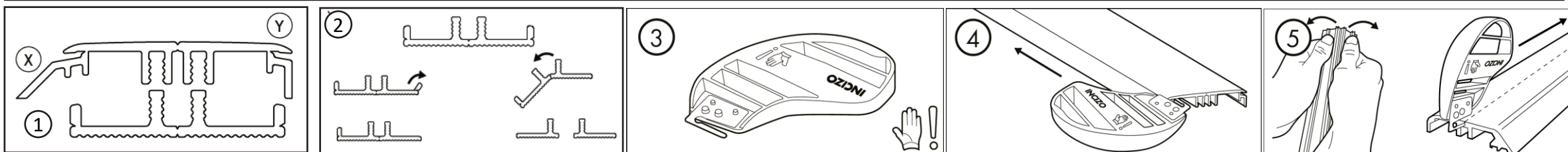


- Use as a T-moulding to connect two floors of similar height, in door openings, or in rooms where the length or width of the floor exceeds the maximum span.
- Use as a Reducer to make the transition between two different floor heights.
- Use as a Square Nose to make the transition to carpet or tile.
- Use as an End profile to finish the edge of a floor against a vertical surface (cabinet toe kicks, sliding doors, walls, windows, etc.)

**IMPORTANT:** Expansion and contraction are natural processes that occur with fluctuations in ambient conditions. It is essential that the floor has room to expand and contract on all sides and at all vertical obstructions. Consequently, an expansion space is needed around the perimeter of the floor and at all vertical obstructions. Against a wall, baseboards are usually used as a finish, while the options provided with our 4-in-1 Multi-Purpose Moulding address other installation requirements. **Always refer to the installation instructions for the product being installed to ensure the necessary expansion space is provided.**



### INSTALLATION GUIDELINES



**CAUTION! ALWAYS WEAR PROTECTIVE GLOVES - THE CUTTING TOOL, AS WELL AS THE CUT EDGES OF THE PROFILE CAN BE SHARP. SANDPAPER IS ATTACHED TO THE SIDE OF THE CUTTING TOOL. ALWAYS SAND THE CUT EDGES TO AVOID BEING CUT. KEEP THE CUTTING TOOL AWAY FROM CHILDREN.**

#### USING THE CUTTING TOOL

The cutting tool should be used to remove the necessary pieces from the profile (X and/or Y – see Fig 1) to produce the desired profile.

While wearing protective gloves, place the profile horizontal on a stable base (Fig 4). Hook the blade of the cutting tool (Fig 3) along the profile so that the blade fits into the narrow groove at the edge of the profile (Fig 4). Being sure not to cut into the PVC base, press the profile downwards while keeping it flat on the stable base to ensure the correct dimensions and shape. Move the cutting tool along the entire length of the profile with a steady and smooth action to remove the necessary piece(s).

For an End Profile, the profile is first split in half lengthwise with a careful snap; the cutting tool is then used to cut through the decorative film (Fig 5). You can use both halves of the profile.

Use a strip of sandpaper to remove any rough edges.

#### INSTALLING THE RAIL

**IMPORTANT: The rail is adhered to the substrate before the moulding is installed.**

Cut the plastic rail slowly to the required length and break off the support leg(s) where the floor will be placed on the rail (Fig.2). For an End Profile, after cutting the rail to the correct length, remove both support legs and snap the rail in half (Fig 2). You can use both halves of the rail. Glue the rail directly on to the substrate, using the recommended adhesive. Apply a continuous bead of adhesive to the rail, ensuring that the glue does not emerge from the rail when it is pressed down.

When installing the floor, make sure that the underlay is placed tightly against the rail without overlapping it. Cut the flooring to leave room for the necessary expansion joint between the edge of the floor and the raised gripping legs of the rail into which the profile will be clicked.

Use a polymer adhesive such as LePage® No More Nails Heavy Duty construction adhesive (or equivalent) to attach the rail to the subfloor. Observe a total curing time of 24 hours.

## The 4-in-1 Multi-Purpose Moulding offers an easy solution to finish your floor

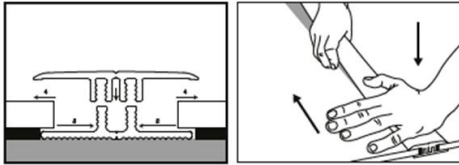
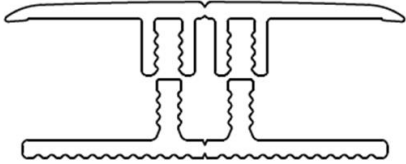
### 1. EXPANSION PROFILE / T-MOULDING

### 2. ADAPTOR PROFILE / REDUCER

### 3. TRANSITION PROFILE / SQUARE NOSE

### 4. END PROFILE

**NOTE:** to make cutting easier, always cut the rail to the required length **before** removing the support leg(s).



#### Install the Rail:

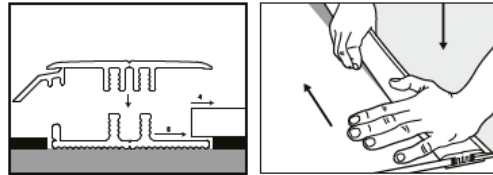
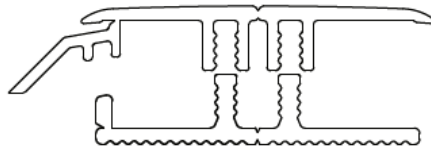
After cutting the rail to the desired length remove **both** support legs. Apply a continuous bead of adhesive to the back of the rail ensuring that the glue does not emerge from the rail when it is pressed down. Press the rail against the subfloor from one edge of the rail to the other.

#### Install the flooring:

Ensure that any underlay – attached or not – does not overlap the base of the rail.

#### Install the Profile:

Use a sharp saw to cut the profile to the desired length. Then, use the cutting tool to remove piece X and piece Y (Fig 1) to produce the expansion/t-moulding profile. Press the profile into the rail from one edge to the other.



#### Install the Rail:

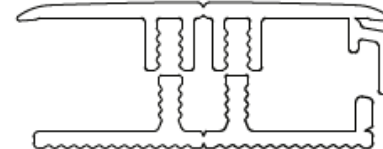
After cutting the rail to the desired length remove **one** support leg. Apply a continuous bead of adhesive to the back of the rail ensuring that the glue does not emerge from the rail when it is pressed down. **With the support leg opposite the flooring side**, press the rail against the subfloor from one edge of the rail to the other.

#### Install the flooring:

Ensure that any underlay – attached or not – does not overlap the base of the rail.

#### Install the Profile:

Use a sharp saw to cut the profile to the desired length. Then, use the cutting tool to remove piece Y (Fig 1) to produce the adaptor/reducer profile. Press the profile into the rail from one edge to the other.



#### Install the Rail:

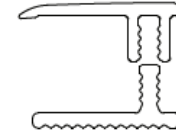
After cutting the rail to the desired length remove **one** support leg. Apply a continuous bead of adhesive to the back of the rail ensuring that the glue does not emerge from the rail when it is pressed down. **With the support leg opposite the flooring side**, press the rail against the subfloor from one edge of the rail to the other.

#### Install the flooring:

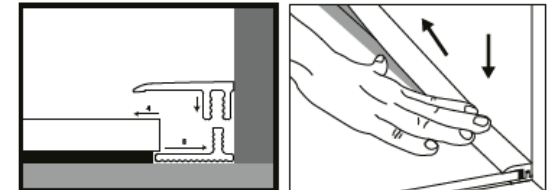
Ensure that any underlay – attached or not – does not overlap the base of the rail.

#### Install the Profile:

Use a sharp saw to cut the profile to the desired length. Then, use the cutting tool to remove piece X (Fig 1) to produce the transition/square nose profile. Press the profile into the rail from one edge to the other.



**2x**



#### Install the Rail:

After cutting the rail to the desired length remove **both** support legs, then carefully snap the rail in half lengthwise (Fig 2). Apply a continuous bead of adhesive to the back of the rail ensuring that the glue does not emerge from the rail when it is pressed down. **With the split side of the rail against wall**, press the rail against the subfloor from one edge of the rail to the other.

#### Install the flooring:

Ensure that any underlay – attached or not – does not overlap the base of the rail.

#### Install the Profile:

Use a sharp saw to cut the profile to the desired length. Use the cutting tool to remove piece X and piece Y (Fig 1). Then, turn the profile so that the base (not the décor) is facing upwards and carefully snap the profile lengthwise. Use the cutting tool to cut through the decorative film. Press the profile into the rail from one edge to the other.