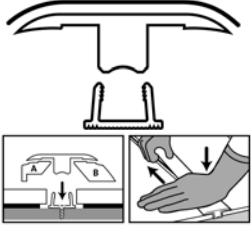
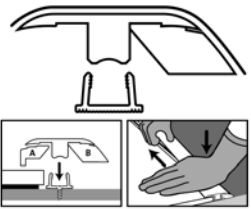




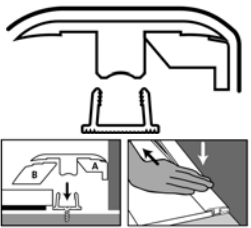
**1 T-MOULDING**



**2 REDUCER**



**3 / 4 SQUARE NOSE**



**END PROFILE**



**TRANSITION PROFILE**



**5 FLUSH MOUNT STAIR NOSE**



**6 OVERLAP STAIR NOSE**



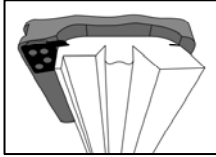
**NOTE:** Instructions for Flush Mount Stair Nose and Overlap Stair Nose are enclosed in the Aluminium sub-profile package. Follow those instructions for correct procedure for installation of Stair Nose.

**INSTRUCTION GUIDELINES**

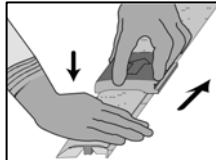
**(i) For Safety**



**(ii) Slide the cutter into the groove (to guide)**



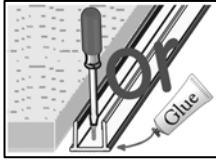
**(iii) Press and Cut**



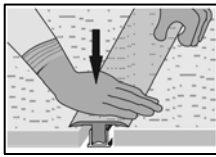
**(iv) Finish. Sanding strip**



**(v) Glue or Screw**

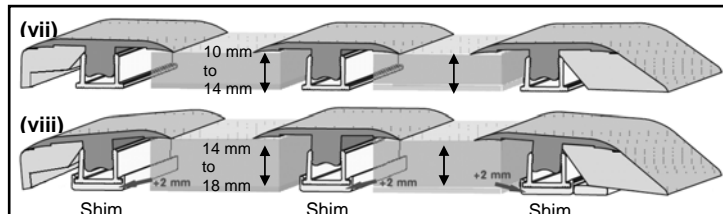


**(vi) Connect to Track**



**(vii) For flooring plus underlayment combinations of – 10mm to 14mm thickness, – NO 2mm SHIM is required. Remove from track.**

**(viii) For flooring plus underlayment combinations of – Greater than 14mm and up to 18mm thickness, – USE the 2mm SHIM provided. When SHIM is required both TRACK and SHIM must be fastened to the sub-floor. \* For flooring plus underlayment combinations – Greater than 18mm thickness, – Additional shimming will be required.**



**ENGLISH**

The TORLYS Solo Plus 5-in-1 Moulding offers an easy solution for the perfect finishing of your floor. You can use the moulding in many ways.

- **T-moulding** is used to connect two floors of similar height, in door openings, in L-shaped rooms or in rooms where the length or width of the floor is greater than 10 meters/30 lineal feet.
- **Reducer** is used to make the transition between two different floor heights.
- **Square Nose** is used to finish the edge of a floor against a vertical surface such as sliding doors, tile floor, etc...
- **Square Nose** can also be used to make the **transition to fitted carpet**.
- **Flush Mount Stair Nose.** For flush installation of stair treads on enclosed or open-end stairs.
- **Overlap Stair Nose.** For installation of stair nose where floating floor expansion and contraction is required.

**NOTE:** Instructions for Flush Mount Stair Nose and Overlap Stair Nose are enclosed in the Aluminium Sub-Profile package. Follow those instructions carefully.

**NOTE:** A TORLYS floor is primarily made of wood. Because the humidity level in the room can vary, for example between summer and winter, it is necessary that the floor has room to expand and contract along all sides. This is why an expansion gap is needed around the perimeter of the floor. Refer to your flooring installation instructions for the correct expansion gap for the floor you are installing.

**INSTRUCTIONS FOR INSTALLATION**

**(i) CAUTION:** Always wear protective gloves – the edge of the profile and the blade are sharp. Read the instructions carefully before use.

**NOTE:** Always cut your TORLYS Solo Plus 5-In-1 to the correct length prior to cutting it into the required profile.

**(ii)** The cutter can be used very simply to cut away one or two pieces of the TORLYS Solo Plus 5-in-1 to obtain the required profile. Place the cutting tool on top of the TORLYS Solo Plus 5-in-1, so that the blade underneath fits into the narrow slit in the profile.

**(iii)** When cutting the profile, always lay it horizontally on a stable surface. Press down on the cutting tool and slide it gently in the direction of the arrow. Take off the piece to be removed.

**(iv)** Remove any unevenness on the edge of the profile by moving the sandpaper side of the cutter along the profile.

**(v) TRACK INSTALLATION**

- (1)** Screws: the track can be attached to the sub-floor with screws. Use the pre-drilled holes between the raised legs of the track. Be aware of any piping in the sub-floor.
- (2)** High quality, construction grade adhesives can be used to attach the track to the sub-floor.

For installations of flooring plus underlayment combination of 10mm to 14mm thickness, see vii.

For installations of flooring plus underlayment combination of 14mm to 18mm thickness, see viii.

**1 T-MOULDING**

First cut TORLYS Solo Plus 5-in-1 to correct length. Use the cutter to cut away pieces A and B to produce your T-Moulding. Note: Cut both sides with the cutter before removing the two pieces. The correct gap to be left between the two installed floors is 1" (25.4mm). Cut track to correct length and center between the two installed floors, then secure to sub floor. If track is secured by adhesive, ensure adhesive is dry and any excess is removed. Excess adhesive will reduce expansion gap or could pin the floor. Install T-Moulding by starting at one end of track gently pressing into track until it is flush with both floors.

**2 REDUCER**

First cut TORLYS Solo Plus 5-in-1 to correct length. Use the cutter to cut away piece A to produce your Reducer Moulding. The correct gap between TORLYS floor and track is ¼" (6.35mm). This will allow for equal expansion and contraction of floor. Cut track to correct length and then secure to sub floor. If track is secured by adhesive, ensure adhesive is dry and any excess is removed. Excess adhesive will reduce expansion gap or could pin the floor. Install Reducer by starting at one end of track and gently pressing into track until it is flush with both floors.

**3 / 4 SQUARE NOSE**

First cut TORLYS Solo Plus 5-in-1 to correct length. Use the cutter to cut away piece B to produce your Square Nose. The correct gap between the TORLYS floor and the track is ¼" (6.35mm). The other side of the track requires a space of 9/16" (14.3mm). Cut track to correct length and then secure to sub floor. If track is secured by adhesive, ensure adhesive is dry and any excess is removed. Excess adhesive will reduce expansion gap or could pin the floor. Install Square Nose by starting at one end of track and gently pressing into track until it is flush with the floor.

**TORLYS 5-in-1 Solo Plus Installation Video** can be seen on YouTube. Go to <http://www.youtube.com/torlysync> and view all the 5-in-1 Moulding install videos.

Visit our website at [www.torlys.com](http://www.torlys.com)